

RAN Update

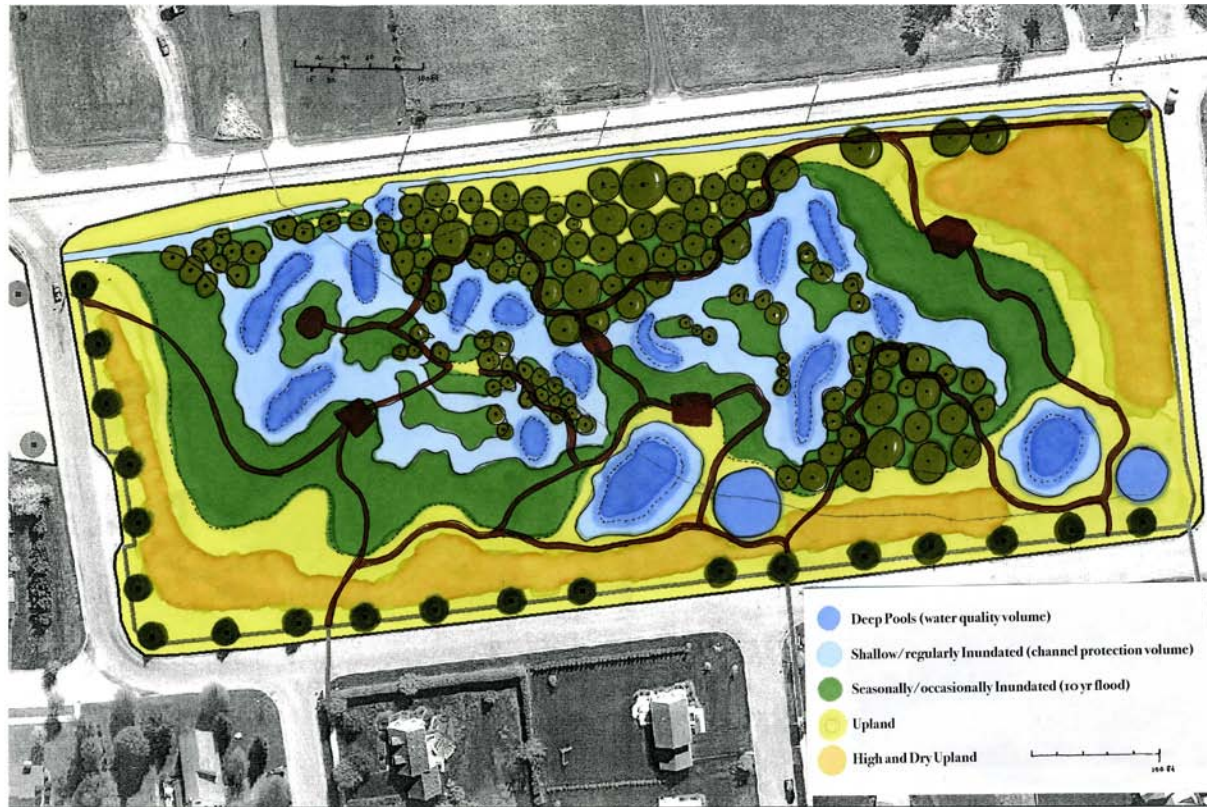
for the

Stormwater Study Group

3 June 2008

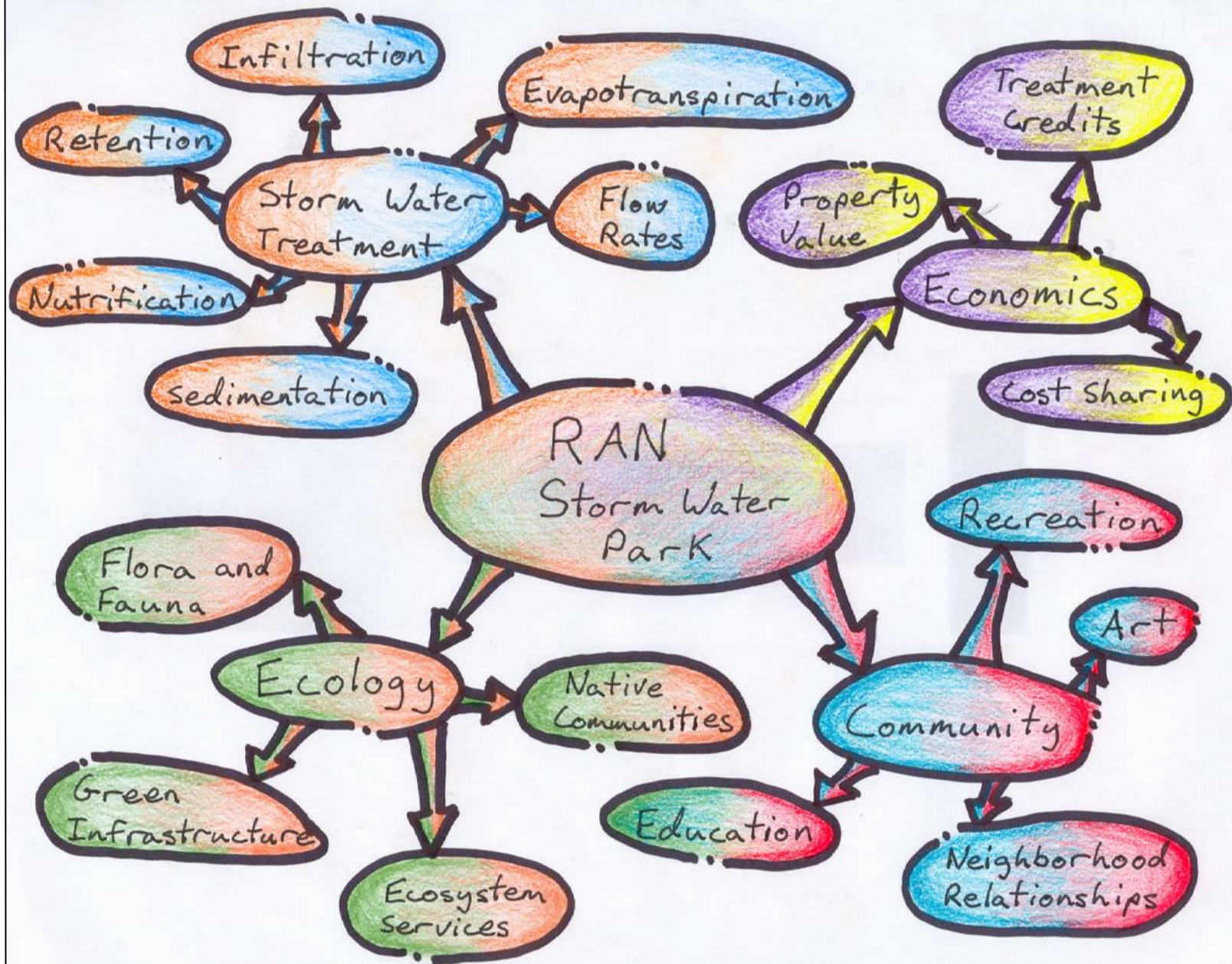
- Work with ANR Stormwater Advisory Group (SWAG) on objective and workable permitting system
- Joel Nipper (PhD, UVM): What is the greater source of sediment – washoff or channel resuspension?
- Andrea Kofstad (MSc, UVM, Walt Kuentzel): Extended survey of homeowner thoughts on stormwater management.
- UVM Ecological Design Project Team (John Todd): A “concept” design for a wetland treatment system

Redesigning the American Neighborhood

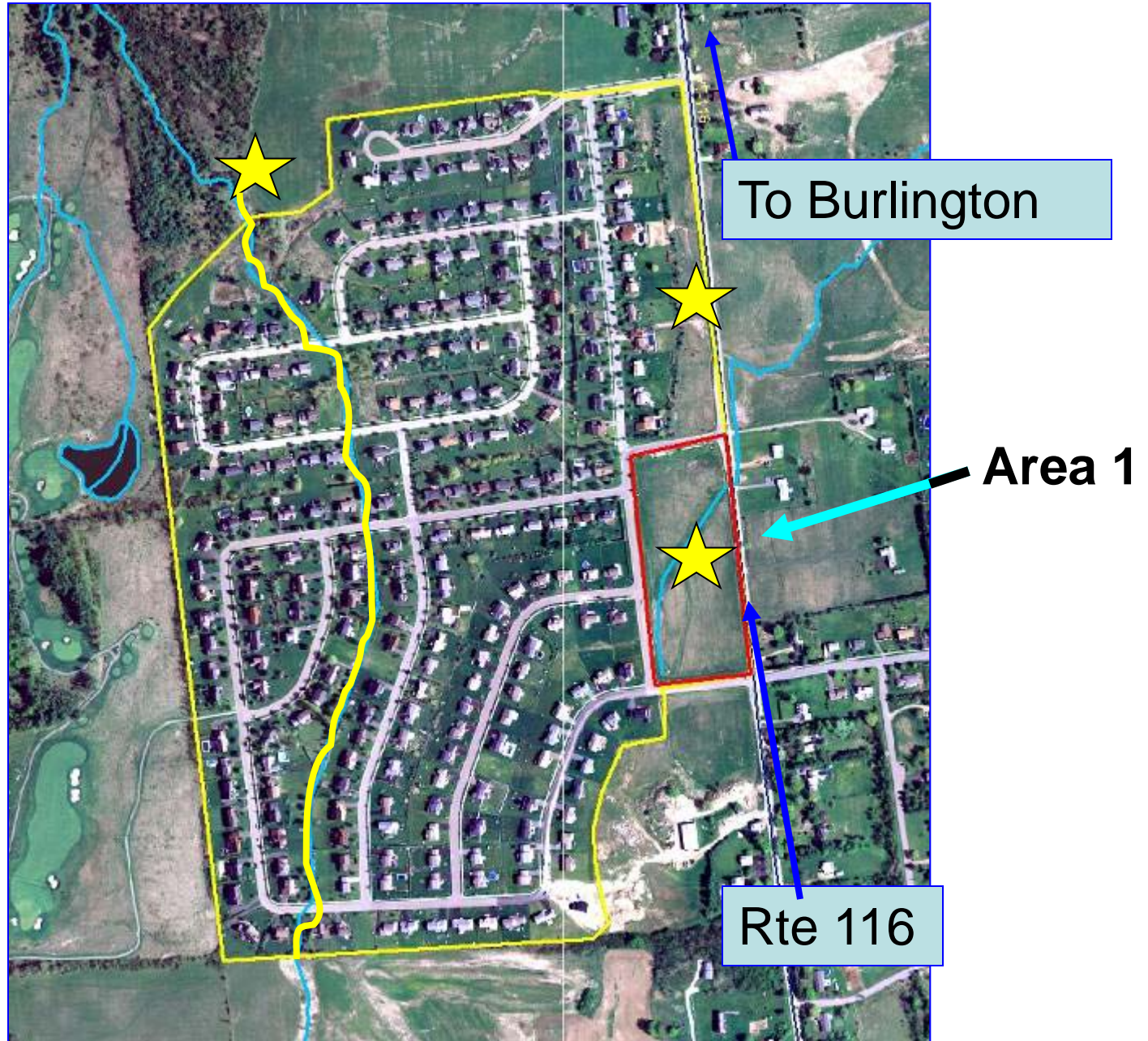


Creating a Multifunctional Wetland Treatment System

Sara Mulford, Alea Tuttle, Corinne Novetti, Ethan Bond-Watts



The Local Context

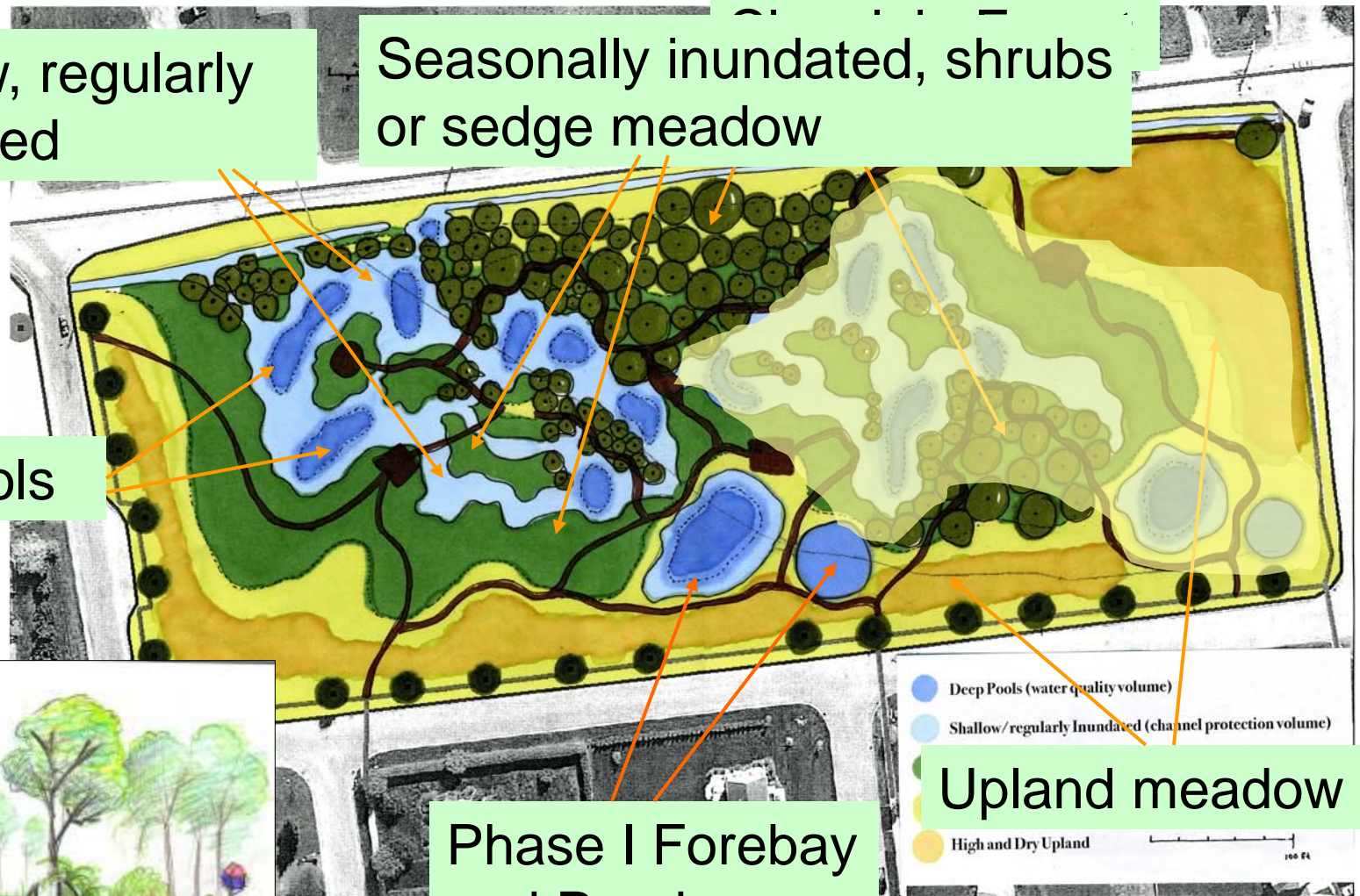
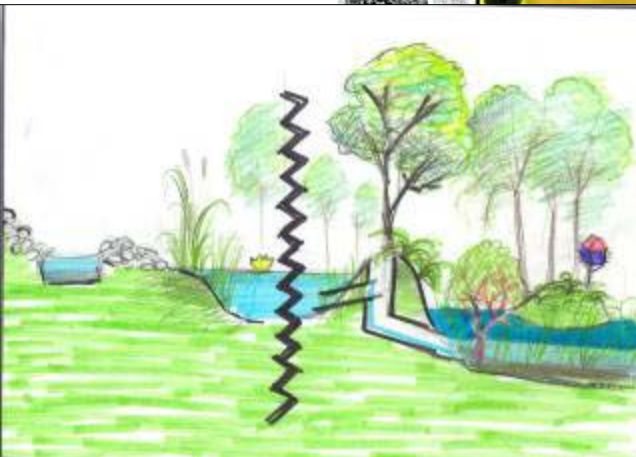


Wetland plan (phase I & II)

Shallow, regularly inundated

Seasonally inundated, shrubs or sedge meadow

Deep pools



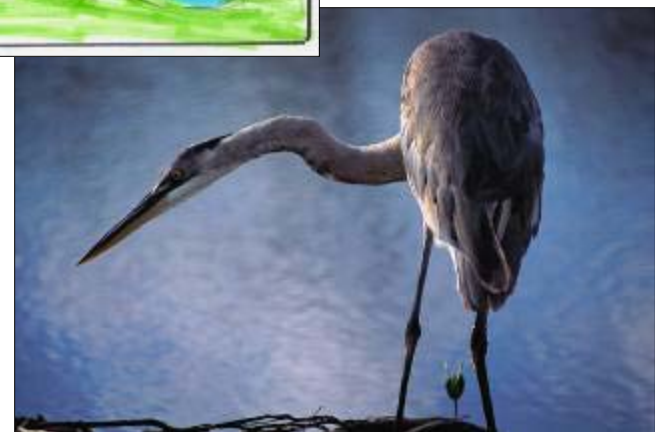
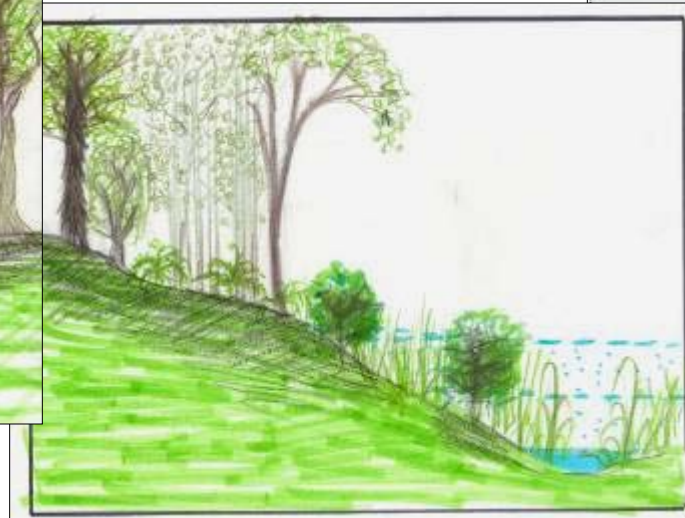
Phase I Forebay and Pond

Upland meadow

- Deep Pools (water quality volume)
- Shallow/regularly Inundated (channel protection volume)
- Upland meadow
- High and Dry Upland



Ecological Functions and Amenities





Community Functions and Amenities

